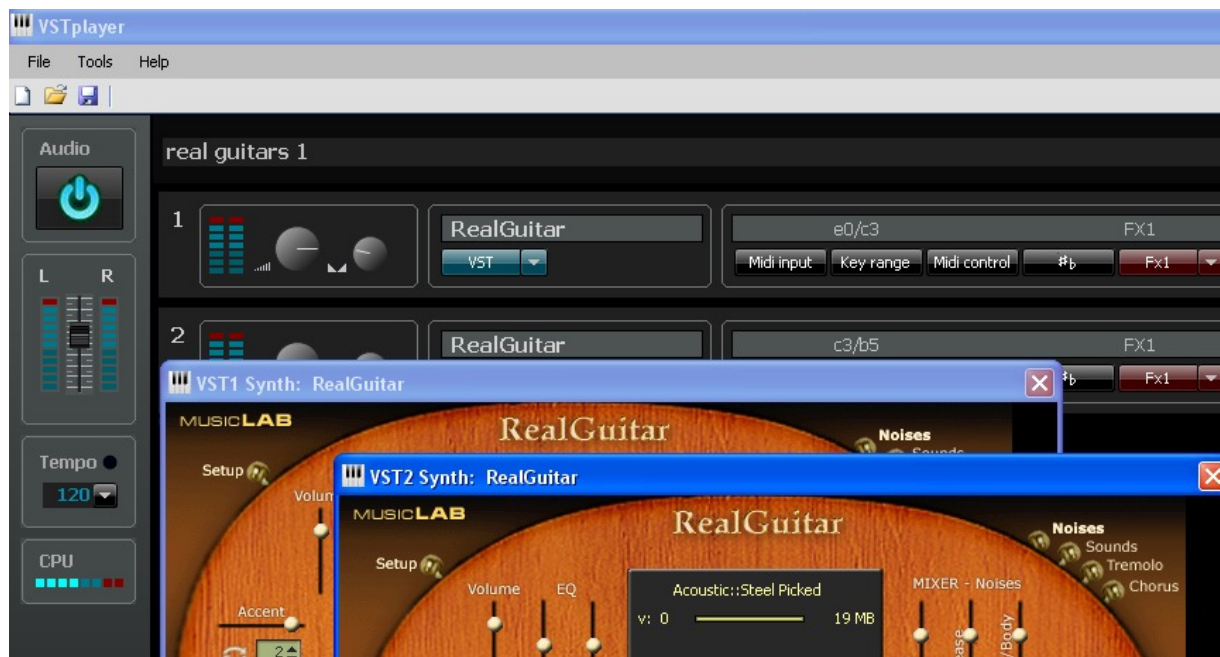


Tocca-music

VSTplayer



Contents

1. USER INFORMATION.....	4
1.1 VST _{PLAYER}	4
1.1.1 <i>Author</i>	4
1.1.2 <i>Copyright</i>	4
1.2 SOFTWARE.....	5
1.2.1 <i>System requirements</i>	5
1.2.2 <i>Installation</i>	5
1.2.3 <i>Licence</i>	5
2. OVERVIEW.....	6
2.1 VST.....	6
2.2 ASIO.....	7
2.2.1 <i>ASIO/VST information</i>	7
3. CONFIGURATION.....	9
3.1 GETTING STARTED.....	9
3.1.1 <i>Audio configuration</i>	9
3.1.2 <i>Midi configuration</i>	12
3.1.3 <i>VST plug-in manager</i>	13
3.2 USING THE VST _{PLAYER}	14
3.2.1 <i>The Audio engine</i>	14
3.2.2 <i>The main volume</i>	15
3.2.3 <i>The Tempo</i>	16
3.2.4 <i>Insert your first VST plug-in</i>	18
3.2.5 <i>Configure the MIDI parameters</i>	19
3.2.5.1 <i>Midi input</i>	19
3.2.5.2 <i>Key range</i>	19
3.2.5.3 <i>Midi control</i>	20
3.2.5.4 <i>Transpose octaves</i>	20
3.2.6 <i>Global transpose</i>	21
3.3 LOAD/SAVE PROJECT DATA.....	22
4. AGREEMENT.....	23
4.1.1 <i>Support</i>	23
4.1.2 <i>Legal Notice Agreement</i>	24

1. User information

1.1 VSTplayer

1.1.1 Author

- Andreas VERHAMME
- Email info@tocca-music.com

The VST effect engine is based on the work of Hermann Seib.

1.1.2 Copyright

- All other product names and any trademarks mentioned are used for identification purposes only and

1.2 Software

1.2.1 System requirements

- Windows XP / Vista / 7 (32 bits)
- Intel® Pentium 4® 2.4 GHz or Intel® Core™ Duo or AMD Athlon™64, 2 GB RAM.
- Microsoft Framework .NET 2.0.50727
- Midi keyboard (external via USB).
- ASIO soundcard is recommended.
- Vst plugins v2.4

1.2.2 Installation

An automatic installation installs the following files on your computer. The default path for installation is: C:\Program Files\Tocca-music\VSTplayer\

- VSTplayer.exe
- SLAudioSlider.dll
- SLBlinkControls.dll
- SLBorderLabel.dll
- SLTrackBar.dll
- SIVUMeter.dll
- VstMidiAsioEngine.dll.

The installation copies also 3 VST effect plug-ins to the VST directory:
[My Documents]\Tocca-music\VSTplayer\VST\:

- tocca-chorus.dll (a simple chorus effect)
- tocca-delay.dll (a simple delay effect)
- tocca-reverb.dll (a simple reverb effect)

1.2.3 Licence

The VSTplayer is a freeware.

2. Overview

2.1 VST



Steinberg's Virtual Studio Technology (VST) is an interface for integrating software audio synthesizer and effect plugins with audio editors and hard-disk recording systems. VST and similar technologies use Digital Signal Processing to simulate traditional recording studio hardware with software like synthesizers did before. Thousands of plug-ins exist, both commercial and freeware, and VST is supported by a large number of audio applications. Famous VST hosts are ProTools, Cubase, Sonar. An example of VST plug-ins are Virtual guitar, FM8, Sampletank, Kontakt4, TruePianos, etc The VSTplayer is a simple host for these plug-ins.

2.2 ASIO



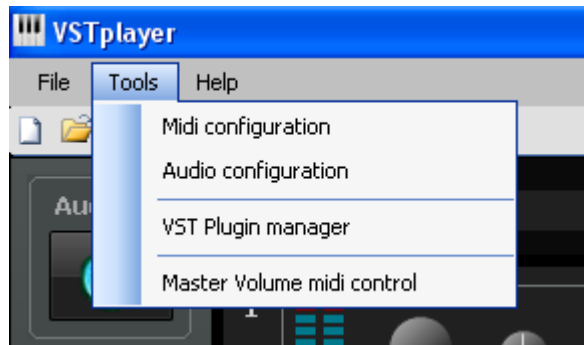
The VSTplayer supports ASIO technology Audio Stream Input/Output (ASIO) is a computer sound card driver protocol for digital audio specified by Steinberg, providing a low-latency and high fidelity interface between a software application and a computer's sound card. Whereas Microsoft's DirectSound is commonly used as an intermediary signal path for non-professional users, ASIO allows musicians and sound engineers to access external hardware directly.

2.2.1 ASIO/VST information

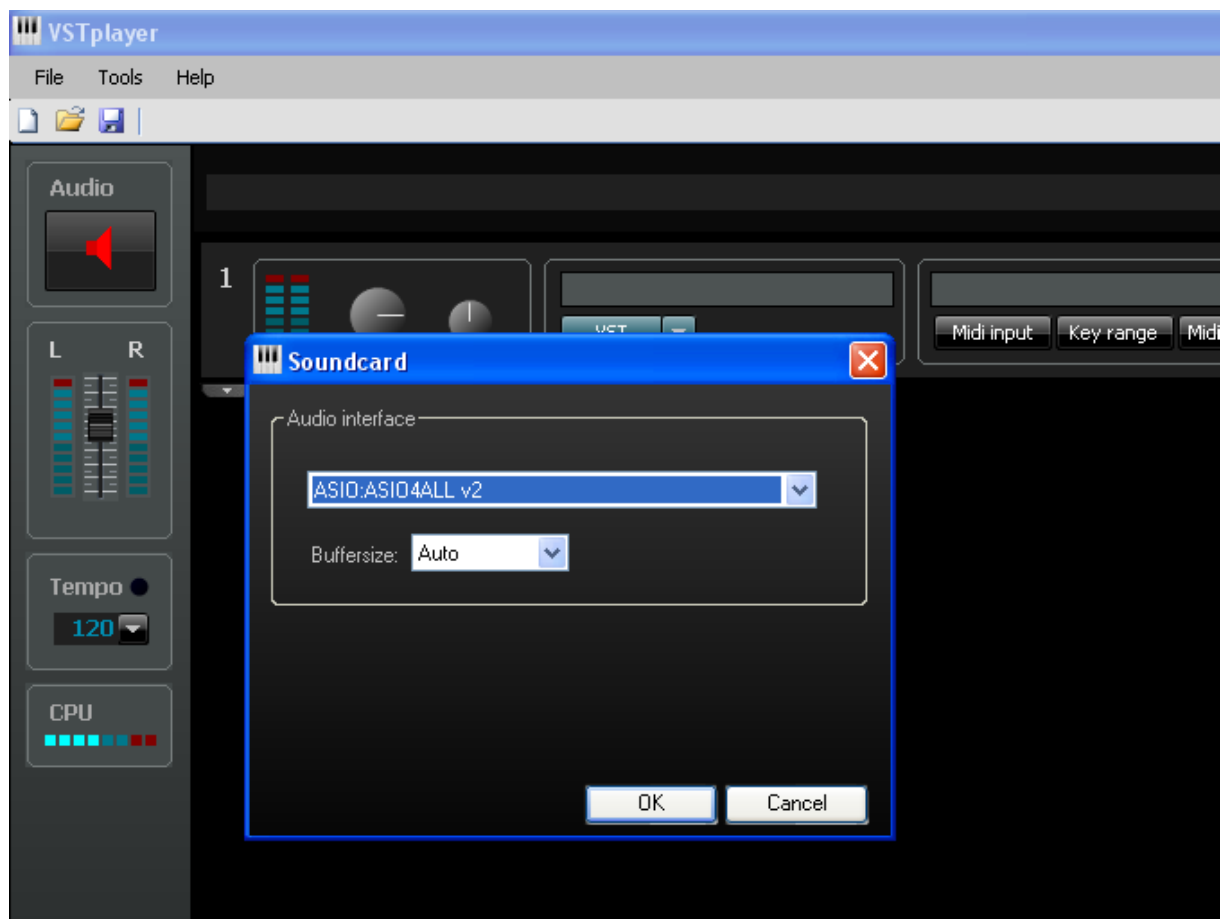
The SDKs for Steinberg's VST and ASIO Software Development Kits can be found on Steinberg website at: www.steinberg.net/

3. Configuration

3.1 Getting started

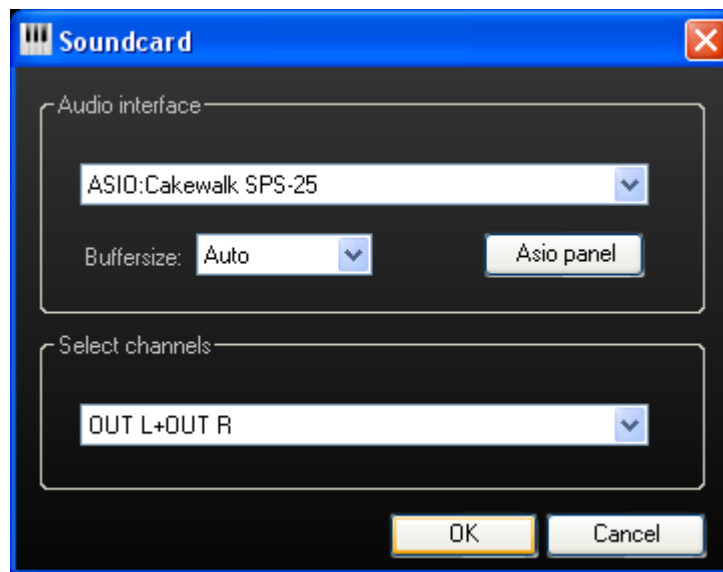


3.1.1 Audio configuration



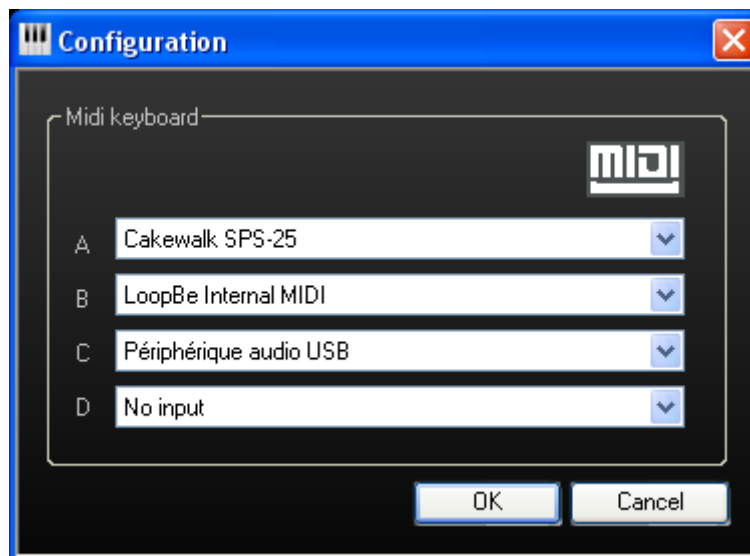
First step is configure your soundcard driver. It is recommended to use an ASIO soundcard like (SONAR Power Studio). If you do not have an ASIO sound card you can use the Wave mapper or run an ASIO emulation software like "ASIO4ALL":

Note: If you choose ALSO you can also select the output channels:

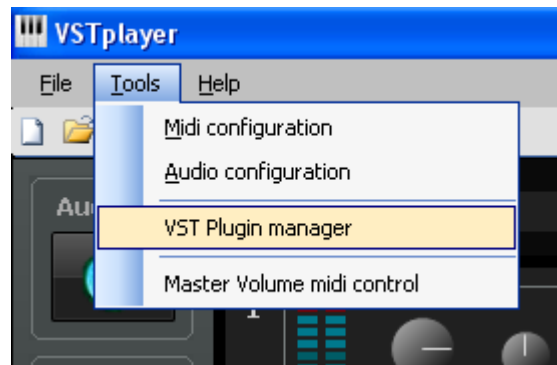


3.1.2 Midi configuration

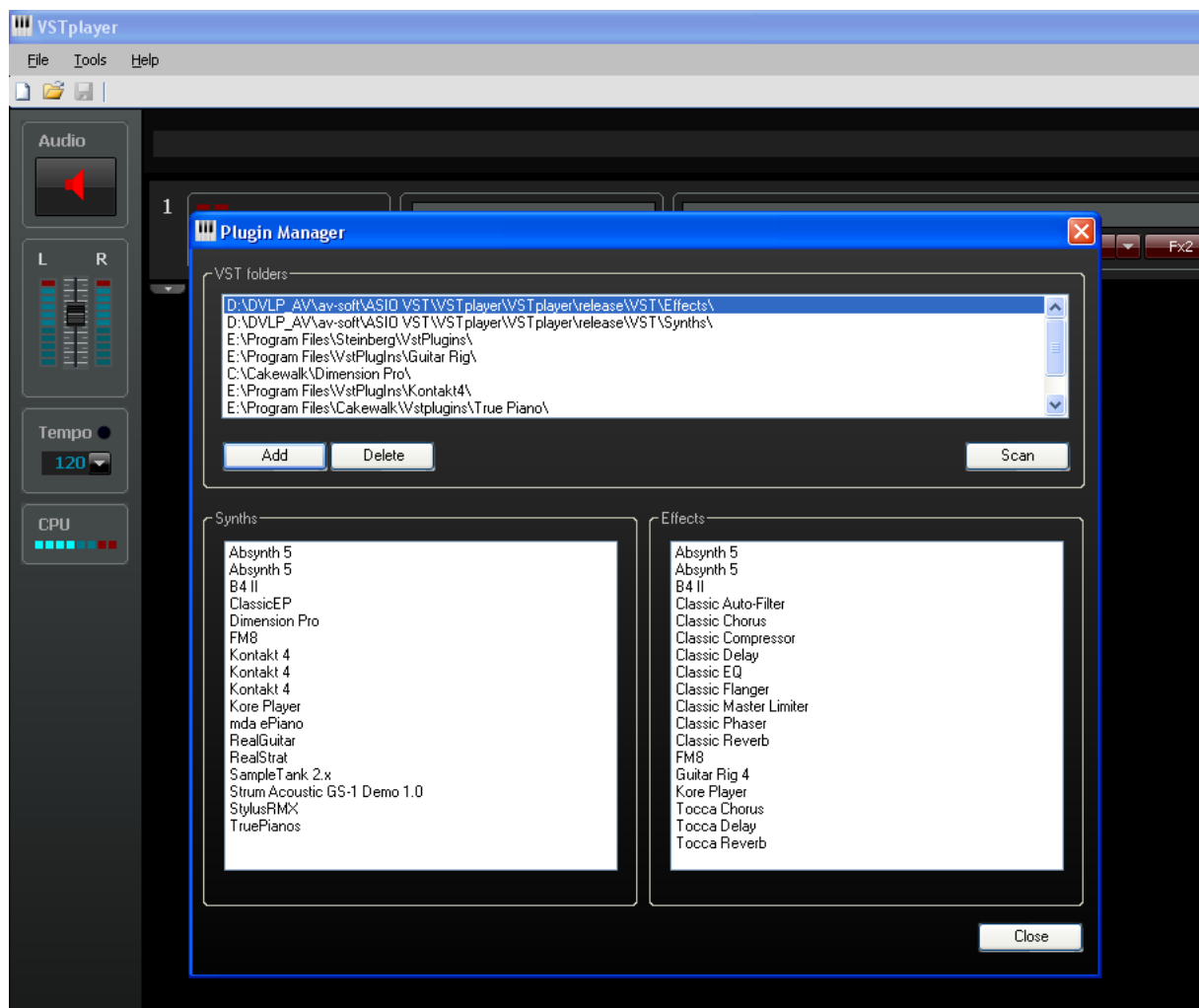
Here you set up to 4 external MIDI keyboards.



3.1.3 VST plug-in manager



Here you manage all your plug-ins you have installed on your computer:

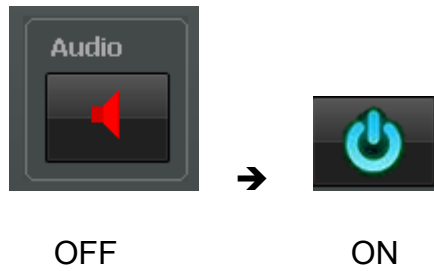


Simply add all the folders where you installed your Plug-in DLLs and click on “SCAN” The VSTplayer will scan all files in the directories and detect if they are “Synths” or “Effects”.

3.2 Using the VSTplayer

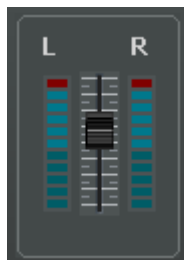
3.2.1 The Audio engine

The audio engine starts and stops automatically, but you can stop it by clicking on the button to stop the audio output:



3.2.2 The main volume

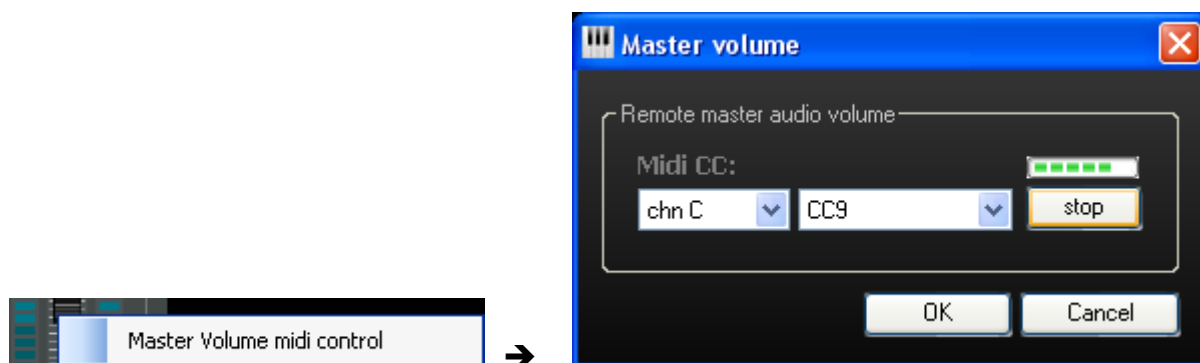
Here you can configure the main volume of the VSTplayer:



The volume can also be controlled by an external controller like the AKAI LPD8:



Click right on the faders and select the MIDI controller button to control the volume:



Note: Much easier is to use the MIDI “Learn” button: In this case just turn a button on your MIDI controller (AKAI LP8) to configure the remote control:

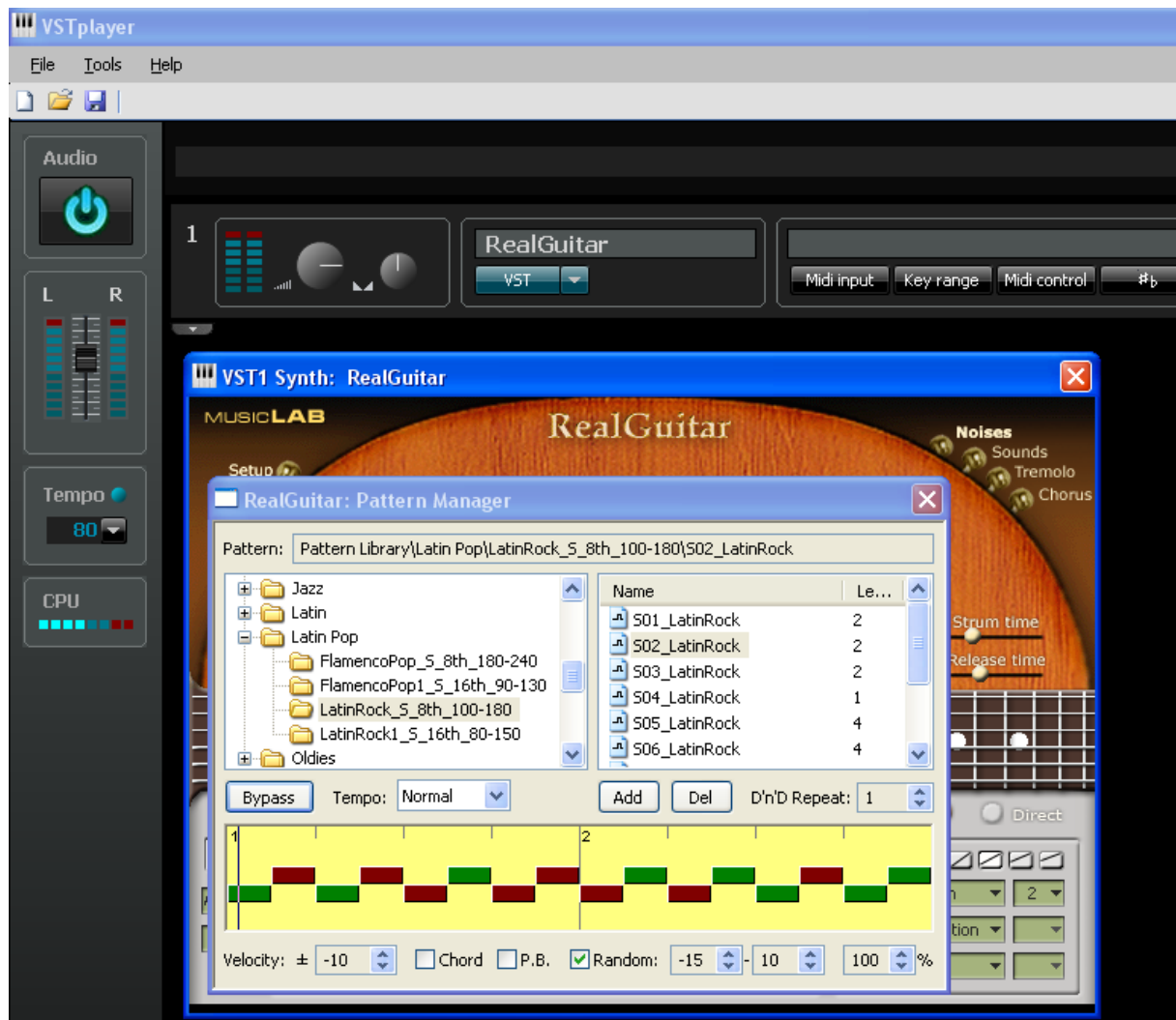


3.2.3 The Tempo

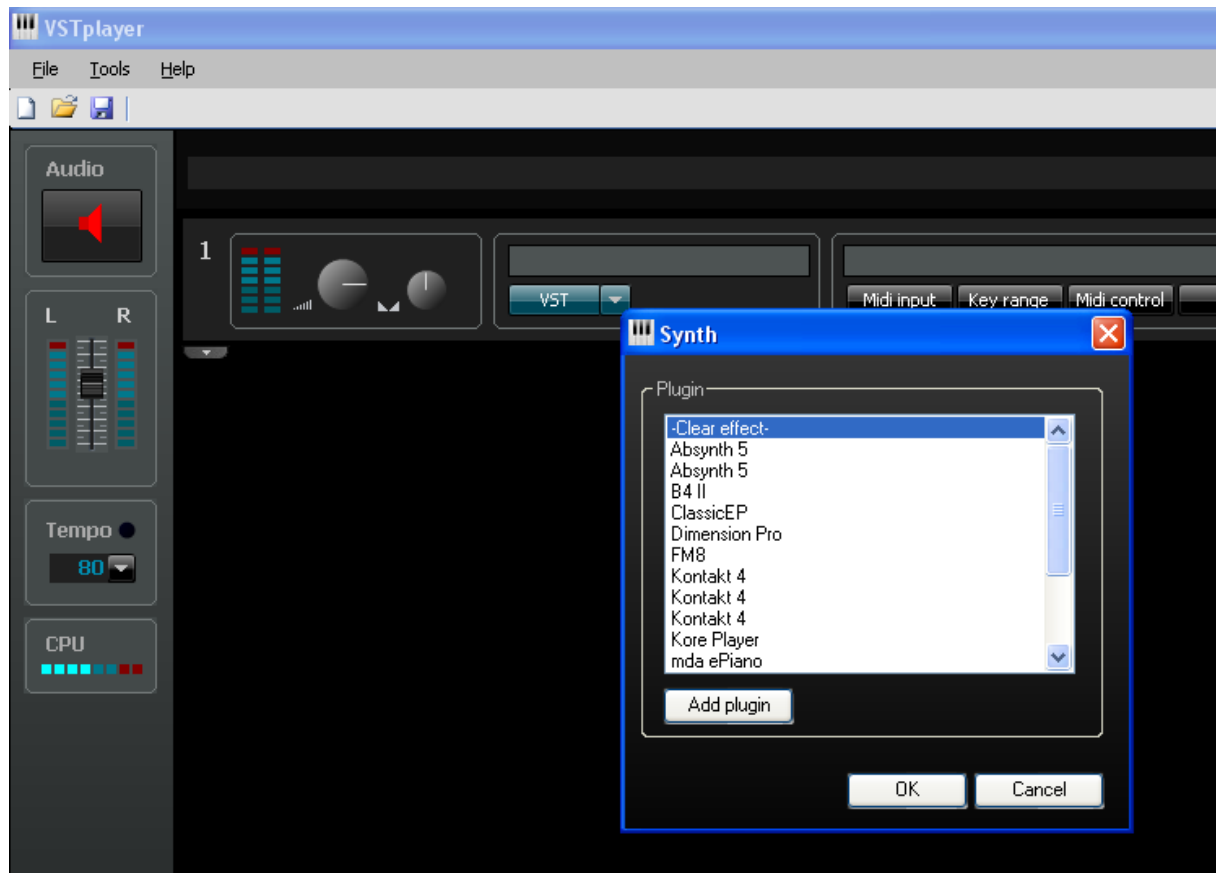
Here you can configure the Tempo. Just “tap” on the button to set up the tempo.



The tempo is useful different VST plug-ins who use patterns like Realguitar:

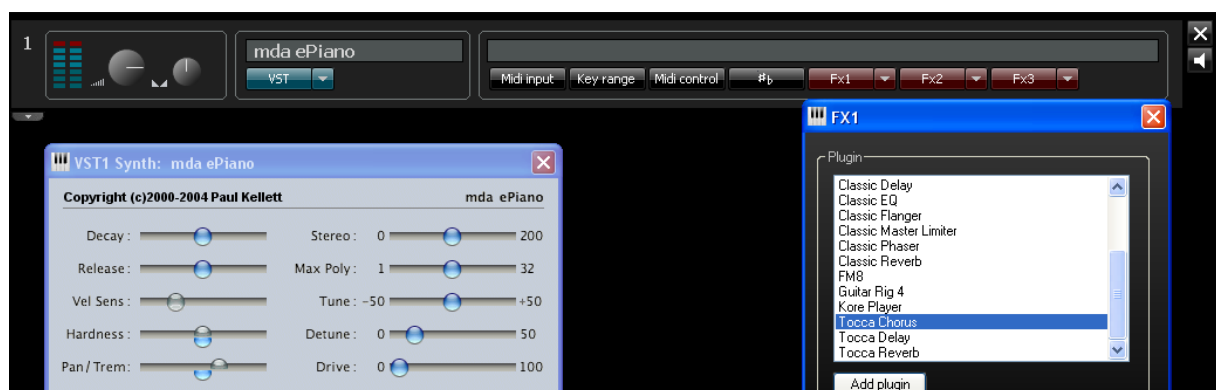


3.2.4 Insert your first VST plug-in



Click on the teal button and select a plug-in synth. If the plug-in is not in the list you can add it using the “Plugin Manager” or “Add the plug-in from here.”

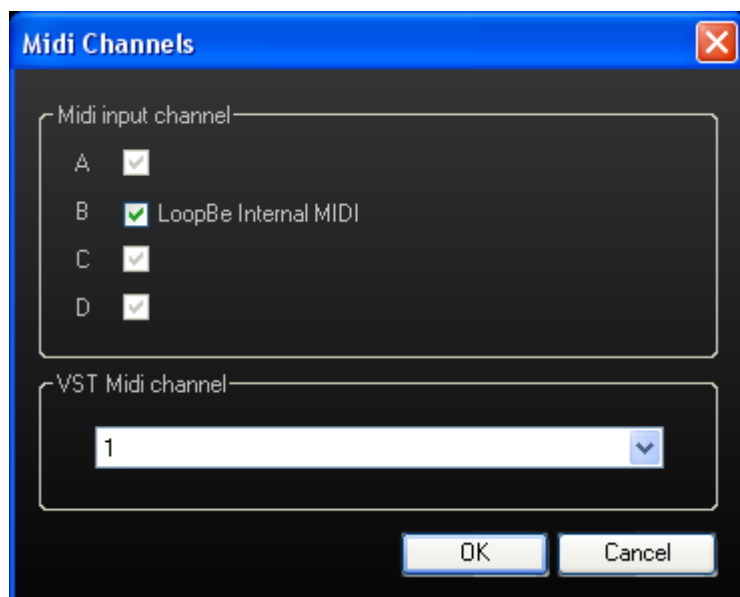
You can select for each synth up to 3 effects:



3.2.5 Configure the MIDI parameters

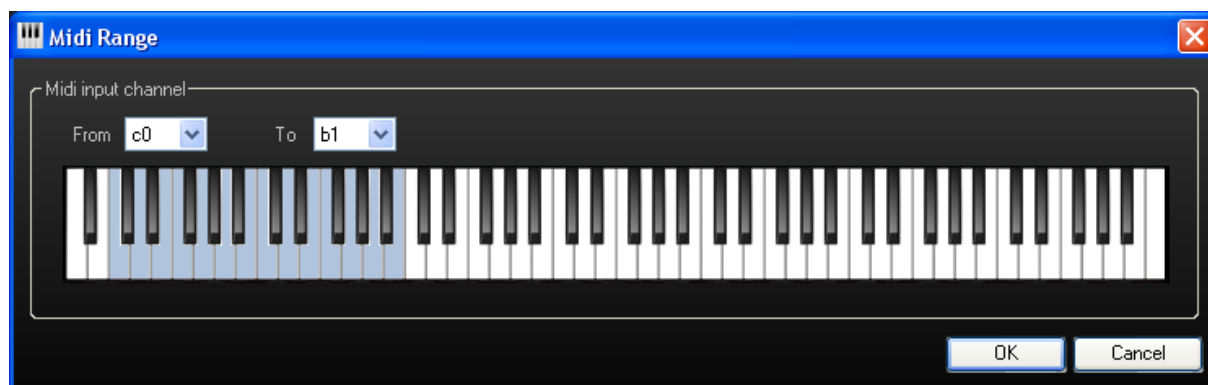


3.2.5.1 Midi input



Here you select the MIDI keyboard channels (A to D) and the Midi channel of the VST synth.

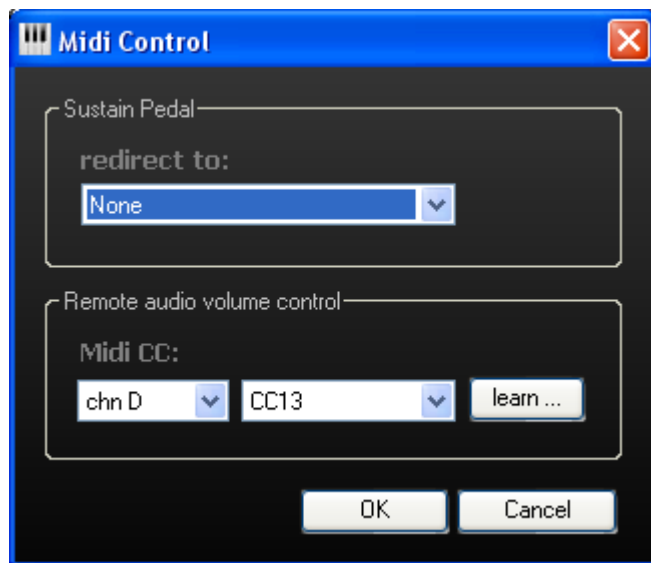
3.2.5.2 Key range



For each of the VSt synths you can configure the key range.

Note: Hit any note from one of the Midi keyboards to configure the range directly.

3.2.5.3 Midi control



Sustain Pedal

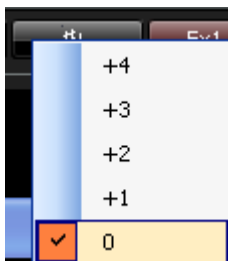
You redirect the Sustain Pedal to "Expression" or "Sostenuto". This is useful when you want to use your Midi keyboard pedal for a different usage than sustain. For example this feature can be used if you use the B4 organ where you want to control the leslie-speaker speed by the keyboard pedal (In this case you assign in the VST B4 organ the Expression pedal → leslie-speaker speed. Putting you foot on your keyboard pedal will than not sustain the sound but change the leslie speed).

Remote Audio volume

You can assign an external Midi keyboard knob to the VST audio volume.



3.2.5.4 Transpose octaves



You can transpose each VST synth from -4 to +4 octaves.

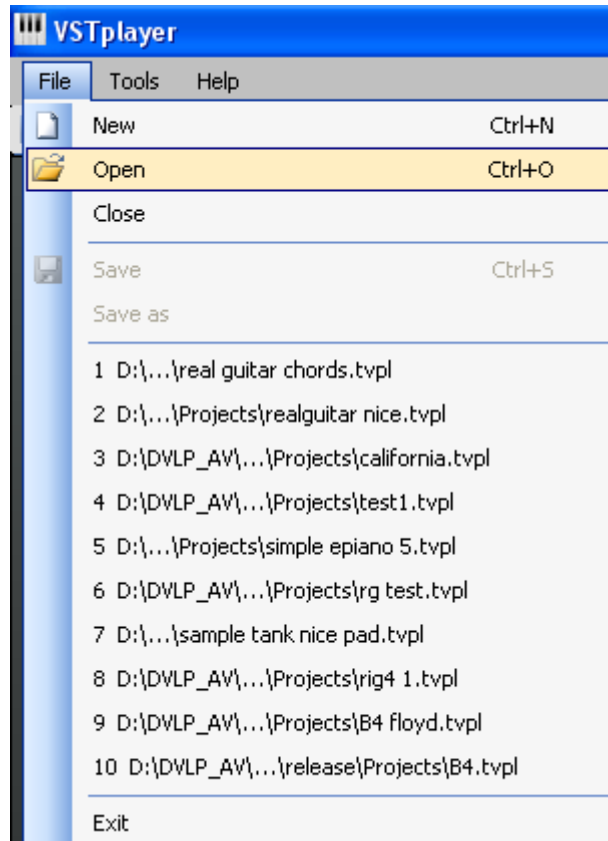
3.2.6 Global transpose



You can also configure a global transpose for all VSt synths form -12 up to +12 halftones.

3.3 Load/save project data

You can save and reload any configuration on a Tvpl data file:



4. Agreement

4.1.1 Support

The Tocca-music VSTplayer is developed and tested on Windows 7 (64bits machine in x86 mode) with the followings plugins:

- ⤴ NI FM8
- ⤴ NI Absynth 5
- ⤴ Kontakt 4
- ⤴ RealGuitar 2
- ⤴ RealStrat
- ⤴ NI Kore Player
- ⤴ Sampletank
- ⤴ Dimension pro
- ⤴ Korg M1
- ⤴ True pianos
- ⤴ organized trio
- ⤴ Guitar Rig 4

Tocca-music is not a company. No telephone support is delivered. You can report bug requests by email (in english, french, german) to:

info@tocca-music.com

4.1.2 Legal Notice Agreement

1. **RESTRICTIONS ON USE.** You may not modify, adapt, translate, reverse engineer, decompile, disassemble, or create derivative works based on this software without the prior written consent of Tocca-music.

2. **OWNERSHIP OF PRODUCT.** Tocca-music retains title and ownership of the software and all subsequent copies of the product, made under the terms of this AGREEMENT, regardless of the form or media on which the original and other copies may exist. This AGREEMENT is not a sale of the original software or any copy. This AGREEMENT grants no title or rights of ownership in the software or any other materials provided by Tocca-music.

3. **COPYRIGHT.** Unauthorized copying of the software, or of the written materials, is expressly forbidden. You may be held legally responsible for any copyright infringement that is caused or encouraged by its failure to abide by the terms of this AGREEMENT. This software and the accompanying written materials can be licensed only to you and may not be transferred to any other party under any circumstances without the prior written consent of Tocca-music. In no event may you transfer, assign, rent, lease, sell, or otherwise dispose of the product or the accompanying written materials on a temporary or permanent basis.

4. **MARKINGS.** You agree to not remove or destroy any copyright or other proprietary notices placed upon or contained within the software, written materials, or any related materials or documentation.

5. **LIABILITY.** In no event shall Tocca-music be liable for any damages or for any claims by other parties. This software and the accompanying files are sold "as is" and without warranties as to performance or any other warranties whether expressed or implied. Because of the various hardware and software environments into which this software may be put, no warranty of fitness for a particular purpose is offered. The user must assume the entire risk of using the program.